

Sheila Hogan, Director

Children/Families

Disabilities

Seniors

Health

[Home](#) » [Public Health & Safety](#) » [Communicable Disease Epidemiology](#) » [Diseases A to Z](#) » [Coronavirus](#) » [Demographics](#)

Coronavirus Disease 2019 (COVID-19)

[Analysis of COVID-19 Cases in Montana as of 07/24/2020](#)

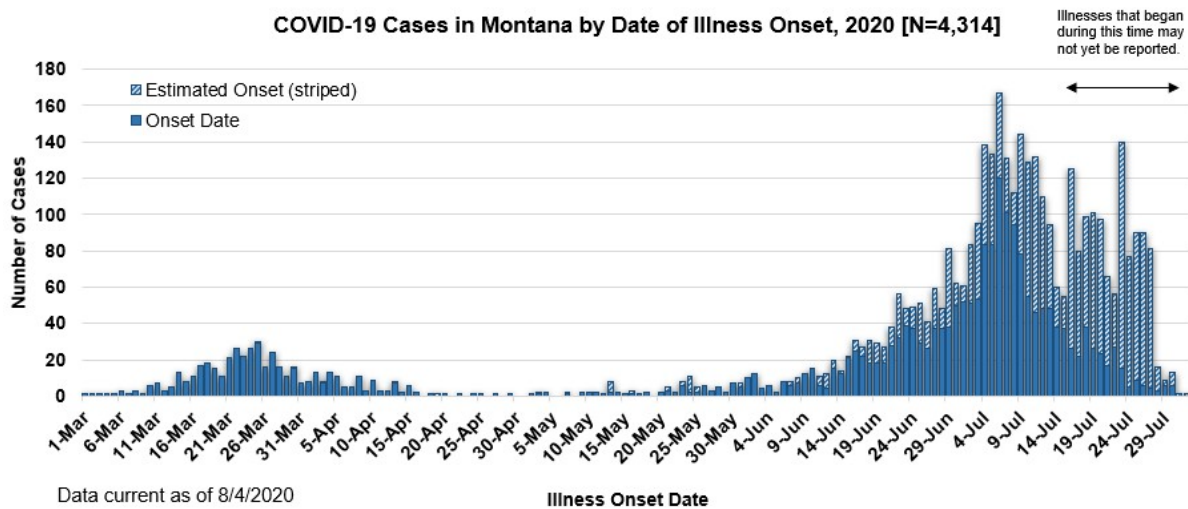
[Archive of COVID-19 Montana Analyses](#)



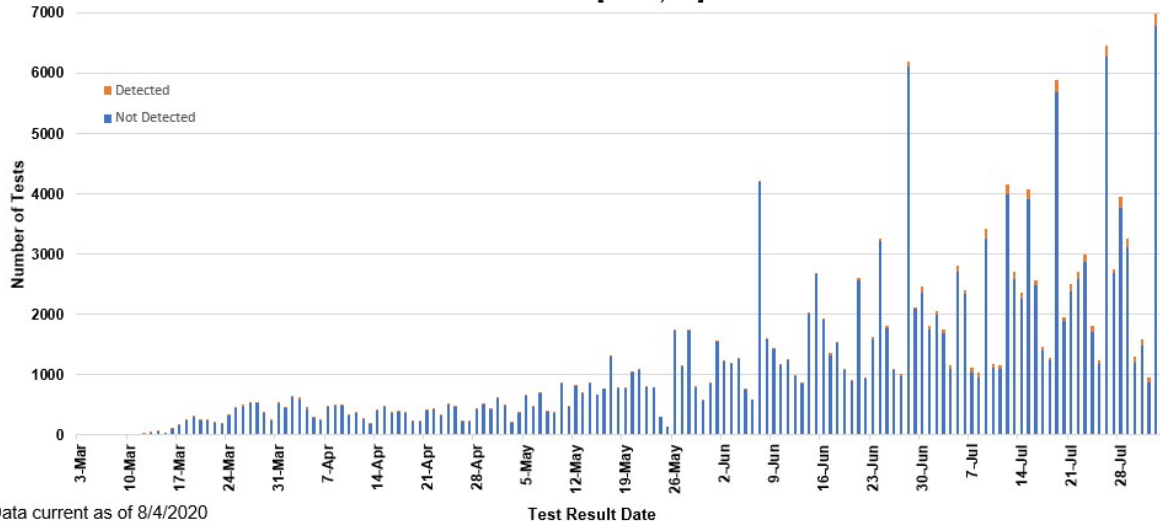
Demographic Information on Confirmed Cases

COVID-19 Cases in Montana	
Total Number of Cases	4314
- Number of Deaths	64

** Tables and charts are updated by 10 am every morning.*



**SARS-Cov-2 PCR Testing at Montana Public Health Laboratory and Reference Laboratories,
Montana 2020 [n=181,236]**



County of Residence	Number of Cases	Number of Deaths	Community Transmission*
Beaverhead	50		Yes
Big Horn	363	11	Yes
Blaine	9		
Broadwater	11		
Carbon	60		
Cascade	154	2	Yes
Choteau	7		
Custer	53	2	
Daniels	32		
Dawson	16		
Deer Lodge	22		
Fallon	2		
Fergus	7		
Flathead	22	2	Yes
Gallatin	874	3	Yes
Garfield	12		
Glacier	58	1	
Golden Valley	3		
Granite	8		
Hill	41		
Jefferson	27		
Judith Basin	3		
Lake	169	1	
Lewis and Clark	145	1	Yes
Liberty	1		

County of Residence	Number of Cases	Number of Deaths	Community Transmission*
Lincoln	71	2	
Madison	78	1	Yes
McCone	2		
Meagher	4		
Missoula	267	1	Yes
Musselshell	2		
Park	52		
Pondera	9		
Powder River	1		
Powell	2		
Ravalli	74	1	Yes
Richland	46	1	
Roosevelt	20		
Rosebud	23	1	Yes
Sanders	9		
Sheridan	3		
Silver Bow	67		
Stillwater	20		
Sweet Grass	4	1	
Teton	15		
Toole	35	6	
Treasure	2		
Valley	13		
Wheatland	3		
Wibaux	3		
Yellowstone	1118	27	Yes
Total	4314	64	

* Community transmission - a community has identified cases who are unable to be linked with other known cases or travel. This status has been determined after consultation between state and local health departments.

Hospitalization Status	Number of Cases (percent of total)
Ever hospitalized	238 (5.5%)
Not Hospitalized	4062 (94.2%)
Under Investigation	14 (<1%)
Total	4314

Age Group	Number of Cases (percent of total)
-----------	------------------------------------

Age Group	Number of Cases (percent of total)
0-9 years	170 (3.9%)
10-19 years	345 (8%)
20-29 years	1132 (26.2%)
30-39 years	705 (16.3%)
40-49 years	531 (12.3%)
50-59 years	536 (12.4%)
60-69 years	464 (11.0%)
70-79 years	256 (5.9%)
80-89 years	129 (3%)
90-99 years	36 (0.8%)
Total	4314

Sex	Number of Cases (percent of total)
Female	2178 (50.5%)
Male	2136 (49.5%)
Total	4314

Race and Ethnicity	Number of Cases (percent of total)
White	2324 (53.9%)
American Indian, Alaska Native, Native Hawaiian, and Pacific Islander	481 (11.1%)
Asian	12 (0.3%)
Black or African American	22 (0.5%)
Other Race	35 (0.8%)
Undetermined/Under investigation	1440 (33.4%)
Total	4314
Among those with ethnicity specified:	
Hispanic/Latino	183 (6.5%)

Race and Ethnicity	Number of Cases (percent of total)
Not Hispanic/Latino	2617 (93.5%)
Total	2800

Current Status of Cases	Number of Cases (percent of total)
Hospitalized	70 (1.6%)
Deceased	64 (1.5%)
Recovering	1414 (32.8%)
Recovered and released from isolation	2766 (64.1%)
Total number of cases	4314

Location (at time of testing) of individuals diagnosed but not residing or counted in Montana:

County	Number of Cases (percent of total)
Beaverhead	3 (2%)
Big Horn	1 (1%)
Carbon	3 (2%)
Cascade	18 (9%)
Custer	4 (2%)
Dawson	1 (1%)
Deer Lodge	1 (1%)
Fallon	1 (1%)
Fergus	2 (1%)
Flathead	45 (22%)
Gallatin	41 (20%)
Glacier	1 (1%)
Granite	1 (1%)
Lake	8 (4%)
Lewis and Clark	5 (3%)
Lincoln	3 (2%)
Madison	21 (11%)
Meagher	1 (1%)
Missoula	7 (4%)
Park	7 (4%)
Powell	1 (1%)
Ravalli	8 (4%)
Silver Bow	4 (3%)
Sweet Grass	1 (1%)

County	Number of Cases (percent of total)
Toole	2 (1%)
Yellowstone	13 (7%)
Total	203

Cases reported in the tables above include **13** residents of other states who were tested, isolated and/or hospitalized in Montana during the early phases of the pandemic. As COVID-19 is now widespread across the United States, data no longer include out-of-state residents who test positive in Montana in order to align with Council of State and Territorial Epidemiologists guidelines that classify cases by the individual's usual state of residence. This is standard practice for all communicable diseases to ensure accurate case reporting for Montana and the US. Additional individuals were diagnosed in Montana but are not included due to residency and/or the transient nature of their visit to the state: data for these individuals are reflected in the table immediately above.



Communicable Disease Epidemiology

Staff Listing



To submit a question or comment to the Communicable Disease Epidemiology Program, please click on the suggestion box to access our online form.

 [Diseases A-Z](#)

 [Disease Reporting](#)

 [Data and Reports](#)

 [Contact Us](#)

Other Program Areas

 [Tuberculosis \(TB\)](#)

 [Healthcare Associated Infections \(HAI\)](#)

 [Sexually Transmitted Diseases \(HIV/STD\)](#)

 [Antimicrobial Resistance](#)

 [Follow DPHHS](#)

The DPHHS CDEpi Section mission is to create, maintain, support, and strengthen routine surveillance and detection systems and epidemiological investigation processes, as well as to expand these systems and processes in response to incidents of public health significance.

[Nondiscrimination Notice/Policy](#)

[Notice of Use of Protected Health Information](#)

[Disclaimer](#)

[Contact Webmaster](#)

[Language Assistance Available](#)

[Español](#) | [Deutsch](#) | [繁體中文](#) | [日本語](#) | [Tagalog](#) | [Français](#) | [Русский](#) | [한국어](#) | [العربية](#) | [ไทย](#) | [Norsk](#) | [Tiếng Việt](#) | [український](#) | [Pennsilfaanisch Deitsch](#) | [Italiano](#)